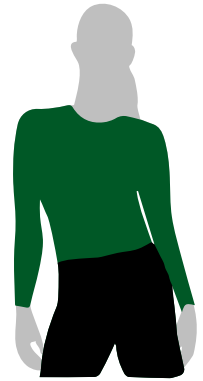


# OBU RAWC APPAREL ETIQUETTE



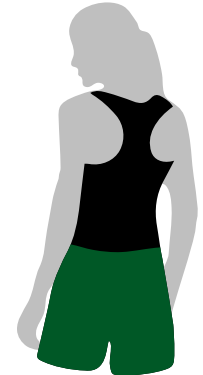
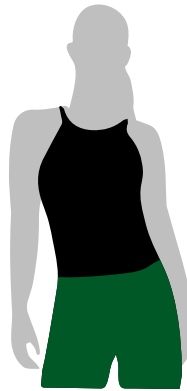
## SHORT SLEEVE AND LONG SLEEVE SHIRTS

Shirts must completely cover midriff and chest; midsection not exposed throughout any range of motion.



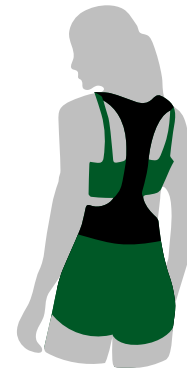
## TANK-TOPS AND MODEST SHORTS

Tops must completely cover the back, midriff, and chest area. The midsection is not exposed throughout any range of motion. Shorts are modest and loose-fitting.



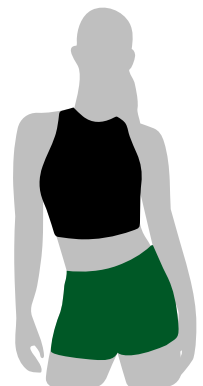
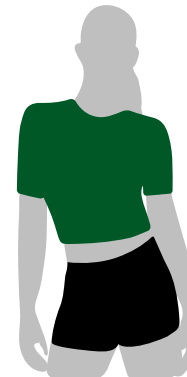
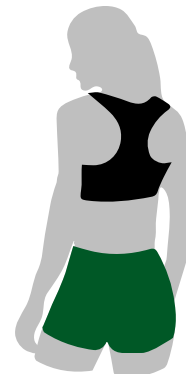
## STRINGERS AND EXTREME CUT-OFFS

Tops should not expose chest, midsection, or back below the bottom bra-line. Arm holes should not be cut shorter than one hand's distance from the armpit.



## CROP-TOPS, NIKE PROS/ COMPRESSION SHORTS

Tops should not expose midriff and sports bras must be covered with a shirt. Compression shorts and Nike Pros, if worn, must be covered by modest, loose-fitting shorts that do not expose the buttocks.



APPAREL ETIQUETTE ENFORCED TO ENSURE SAFETY, HYGIENIC EQUIPMENT,  
AND A COMFORTABLE ATMOSPHERE FOR EVERYONE.

